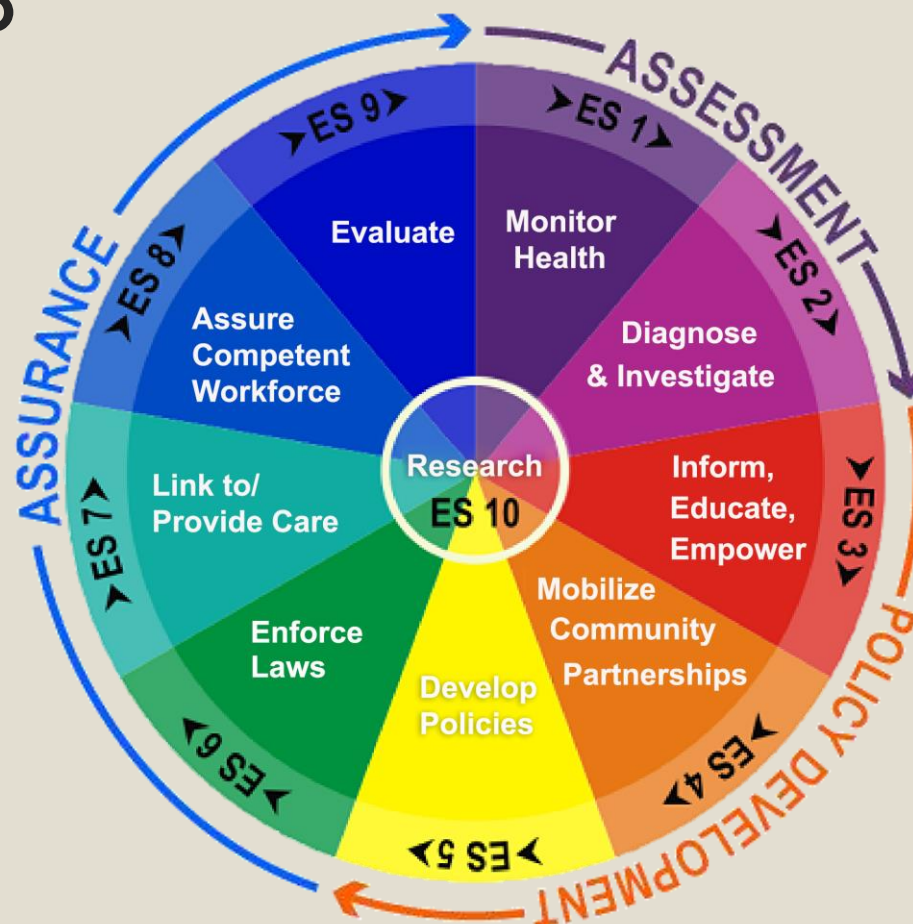


Essential Service 1: Monitor Health Status to Identify Community Health Problems

Breakout Session A:
9:05AM-11:00AM

Facilitators:
Nicole Marriott, MBA
Florence Greer, MPH, MPA

- What is going on in our community?
- Do we know how healthy we are?



Session Outline

- ❖ **Introductions**
- ❖ Review ground rules
- ❖ **Process and material overview**
- ❖ Essential service and activities review
- ❖ **Review current Essential Service activity**
- ❖ Repeat the following for each Model Standard:
 - **Read Model Standard**
 - Discuss Model Standard activity (i.e., examples)
 - **Facilitate Discussion Questions**
 - Score Performance Measures
 - **Further discussion as needed/re-vote if necessary**
 - Consensus on final score
 - **Summarize strengths, weaknesses, and short- and long-term improvement opportunities for the Model Standard**
- ❖ Session Summary and Recap

Ground Rules

- Stay present (phones on silent/vibrate, limit side conversations)
- Speak one at a time
- Be open to new ideas
- Step up/step back (to make sure all participate)
- Avoid repeating previous remarks
- Allow facilitator to move conversation along
- Welcome all perspectives
- Use electronic device to vote (everyone votes at same time)
- Raise hand to request additional discussion before voting
- Prepare to provide examples and explanation to inform group and increase understanding of your rating



NACCHO
National Association of County & City Health Officials

National Public Health
Performance Standards
Local Assessment Instrument
Version 3.0

Essential Service 1

Monitoring health status to identify community health problems

- Assessing, accurately and continually, the community's health status
- Identifying threats to health
- Determining health service needs
- Paying attention to the health needs of groups that are at higher risk than the total population

Essential Service 1

Monitoring health status to identify community health problems

- Identifying community assets and resources that support the public health system in promoting health and improving quality of life
- Using appropriate methods and technology to interpret and communicate data to diverse audiences
- Collaborating with other stakeholders, including private providers and health benefit plans, to manage multi-sectorial integrated information systems



Essential Service 1 Partners

Model Standard 1.1: Population-Based Community Health Assessment

- An overall look at the community's health
- Identifies and describes factors that affect the health of a population
- Pinpoints factors that determine the availability of resources within the community to adequately address health concerns
- Serves as the foundation for improving and promoting the health of the community
- Should be completed at least every three years

A graphic with a blue background showing a pen writing on a document with a bar chart in the background.

**Community Health
Needs Assessment**

Model Standard 1.1: Population-Based Community Health Assessment

- An in-depth picture or understanding of community health
- Able to identify the most vulnerable populations and related health inequities, prioritize health issues, identify best practices to address health issues, allocate resources where they are most needed, and provide a basis for collaborative efforts to promote the public's health
- Tracks the health of a community over time and compares local measures to other local, state, and national benchmarks



Model Standard 1.1: Population-Based Community Health Assessment

To accomplish this, members of the LPHS work together to:

- Assess the health of the community regularly
- Continuously update the CHA with current information
- Promote the use of the CHA among community members and partners



Discussion Questions for Model Standard 1.1

Awareness



Was everyone aware of the assessment?



Does everyone have access to the CHA?

Discussion Questions for Model Standard 1.1

Involvement



**How many of you have
participated in the
assessment?**

Discussion Questions for Model Standard 1.1

Frequency



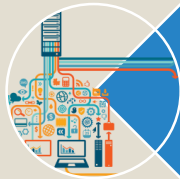
How often is the CHA completed?



How often do updates to the CHA occur?

Discussion Questions for Model Standard 1.1

Quality and Comprehensiveness



Which data sets are included in the CHA?



**How is the CHA used to monitor progress toward:
Local health priorities? State health priorities?
Healthy People 2020 national objectives?**



**How well does the CHA examine data over
time to track trends?**



**How are the data helping identify health
inequities?**

Discussion Questions for Model Standard 1.1

Usability



How accessible to the general public are the CHA results?



How is the CHA distributed to the community?



How is the CHA used to inform health policy and planning decisions?

We will be using Participoll in this presentation.
Please have this website ready:

<http://lphsa.participoll.com/>

<http://LPHSA.participoll.com/>



If technical difficulties are encountered during the polling, please use the five assorted color index cards found in your welcome packet to vote.

Scoring Chart



A	Optimal Greater than 75% of the activity described within the question is met.
B	Significant Greater than 50% but no more than 75% of the activity described within the question is met.
C	Moderate Greater than 25% but no more than 50% of the activity described within the question is met.
D	Minimal Greater than zero but no more than 25% of the activity described within the question is met.
E	No Activity 0% or absolutely no activity.

To vote, visit <http://lphsa.participoll.com/>

If technical difficulties are encountered during the polling, please use the five assorted color index cards found in your welcome packet to vote.

To vote, visit <http://lphsa.participoll.com/>



Performance Measures for Model Standard 1.1

At what level does the LPHS...

1.1.1 Conduct regular CHAs?

A	Optimal Greater than 75% of the activity described within the question is met.
B	Significant Greater than 50% but no more than 75% of the activity described within the question is met.
C	Moderate Greater than 25% but no more than 50% of the activity described within the question is met.
D	Minimal Greater than zero but no more than 25% of the activity described within the question is met.
E	No Activity 0% or absolutely no activity.



To vote, visit <http://lphsa.participoll.com/>



Performance Measures for Model Standard 1.1

At what level does the LPHS...

1.1.2 Update the CHA with current information continuously?

A	Optimal Greater than 75% of the activity described within the question is met.
B	Significant Greater than 50% but no more than 75% of the activity described within the question is met.
C	Moderate Greater than 25% but no more than 50% of the activity described within the question is met.
D	Minimal Greater than zero but no more than 25% of the activity described within the question is met.
E	No Activity 0% or absolutely no activity.



To vote, visit <http://lphsa.participoll.com/>



Performance Measures for Model Standard 1.1

At what level does the LPHS...

1.1.3 Promote the use of the CHA among community members and partners?

A	Optimal Greater than 75% of the activity described within the question is met.
B	Significant Greater than 50% but no more than 75% of the activity described within the question is met.
C	Moderate Greater than 25% but no more than 50% of the activity described within the question is met.
D	Minimal Greater than zero but no more than 25% of the activity described within the question is met.
E	No Activity 0% or absolutely no activity.



Discussion Notes for Model Standard 1.1

Strengths

Weaknesses

**Short-Term
Improvement
Opportunities**

**Long-Term
Improvement
Opportunities**

Model Standard 1.2: Current Technology to Manage and Communicate Population Health Data

- Provides the public with a clear picture of the current health of the community
- Health problems are looked at over time and trends related to age, gender, race, ethnicity, and geographic distribution
- Data are shown in clear ways, including graphs, charts, and maps, while the confidential health information of individuals is protected
- Software tools are used to understand where health problems occur, allowing the community to plan efforts to lessen the problems and to target resources where they are most needed



Model Standard 1.2: Current Technology to Manage and Communicate Population Health Data

To accomplish this, members of the LPHS work together to:

- Use the best available technology and methods to combine and show data on the public's health
- Analyze health data, including geographic information, to see where health problems exist
- Use computer software to create charts, graphs, and maps which show trends over time and compare data for different population groups

Discussion Questions for Model Standard 1.2

Awareness



What technology is available to LPHS partners to support health profile databases?

Discussion Questions for Model Standard 1.2

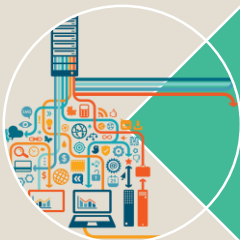
Quality and Comprehensiveness



How does the LPHS use technology to support CHA databases?



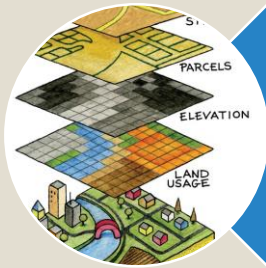
At what level does the LPHS have access to and include geocoded health data?



At what level within the community are the data available?

Discussion Questions for Model Standard 1.2

Quality and Comprehensiveness



How does the LPHS use geographic information systems (GIS)?



How does the LPHS use computer-generated graphics?

To vote, visit <http://lphsa.participoll.com/>



Performance Measures for Model Standard 1.2

At what level does the LPHS...

1.2.1 Use the best available technology and methods to display data on the public's health?

A	Optimal Greater than 75% of the activity described within the question is met.
B	Significant Greater than 50% but no more than 75% of the activity described within the question is met.
C	Moderate Greater than 25% but no more than 50% of the activity described within the question is met.
D	Minimal Greater than zero but no more than 25% of the activity described within the question is met.
E	No Activity 0% or absolutely no activity.



To vote, visit <http://lphsa.participoll.com/>



Performance Measures for Model Standard 1.2

At what level does the LPHS...

1.2.2 Analyze health data, including geographic information, to see where health problems exist?

A	Optimal Greater than 75% of the activity described within the question is met.
B	Significant Greater than 50% but no more than 75% of the activity described within the question is met.
C	Moderate Greater than 25% but no more than 50% of the activity described within the question is met.
D	Minimal Greater than zero but no more than 25% of the activity described within the question is met.
E	No Activity 0% or absolutely no activity.



To vote, visit <http://lphsa.participoll.com/>



Performance Measures for Model Standard 1.2

At what level does the LPHS...

1.2.3 Use computer software to create charts, graphs, and maps to display complex public health data (trends over time, sub-population analyses, etc.)?

A	Optimal Greater than 75% of the activity described within the question is met.
B	Significant Greater than 50% but no more than 75% of the activity described within the question is met.
C	Moderate Greater than 25% but no more than 50% of the activity described within the question is met.
D	Minimal Greater than zero but no more than 25% of the activity described within the question is met.
E	No Activity 0% or absolutely no activity.



Discussion Notes for Model Standard 1.2

Strengths

Weaknesses

**Short-Term
Improvement
Opportunities**

**Long-Term
Improvement
Opportunities**

Model Standard 1.3: Maintaining Population Health Registries

- Collect data on health-related events for use in population health registries
- Registries allow more understanding of major health concerns
- Give timely information to at-risk populations
- Ensure accurate and timely reporting of all the information needed for health registries



Model Standard 1.3: Maintaining Population Health Registries

- Population health registry data can be compared with other data from private, local, state, regional, and national sources
- Population registries provide information for policy decisions, program implementation, and population research

Model Standard 1.3: Maintaining Population Health Registries

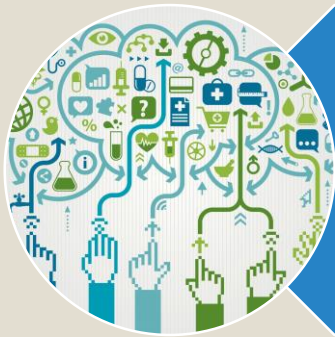
To accomplish this, members of the LPHS work together to:

- Collect data on specific health concerns to provide to population health registries in a timely manner and consistent with current standards
- Use information from population health registries in CHAs or other analyses



Discussion Questions for Model Standard 1.3

Involvement



Which population health registries are contributed to and/or maintained within the LPHS?



What partners contribute to and/or maintain population health registries?

Discussion Questions for Model Standard 1.3

Frequency



How often are the data used by the LPHS for such activities? Have they been used in the past year?

Discussion Questions for Model Standard 1.3

Quality



What specific standards are in place for data collection?



What established processes are there for reporting health events to the registries? Are they followed?



What, if any, systems are in place to ensure accurate, timely, and unduplicated reporting?

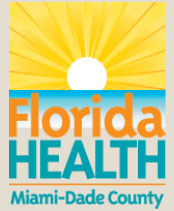
Discussion Questions for Model Standard 1.3

Usability



How are population
health registries used
by the LPHS?

To vote, visit <http://lphsa.participoll.com/>



Performance Measures for Model Standard 1.3

At what level does the LPHS...

1.3.1 Collect timely data consistent with current standards on specific health concerns in order to provide the data to population health registries?

A	Optimal Greater than 75% of the activity described within the question is met.
B	Significant Greater than 50% but no more than 75% of the activity described within the question is met.
C	Moderate Greater than 25% but no more than 50% of the activity described within the question is met.
D	Minimal Greater than zero but no more than 25% of the activity described within the question is met.
E	No Activity 0% or absolutely no activity.



To vote, visit <http://lphsa.participoll.com/>



Performance Measures for Model Standard 1.3

At what level does the LPHS...

1.3.2 Use information from population health registries in CHAs or other analyses?

A	Optimal Greater than 75% of the activity described within the question is met.
B	Significant Greater than 50% but no more than 75% of the activity described within the question is met.
C	Moderate Greater than 25% but no more than 50% of the activity described within the question is met.
D	Minimal Greater than zero but no more than 25% of the activity described within the question is met.
E	No Activity 0% or absolutely no activity.



Discussion Notes for Model Standard 1.3

Strengths

Weaknesses

**Short-Term
Improvement
Opportunities**

**Long-Term
Improvement
Opportunities**

Essential Service 1: Monitor Health Status to Identify Community Health Problems

Session Summary

