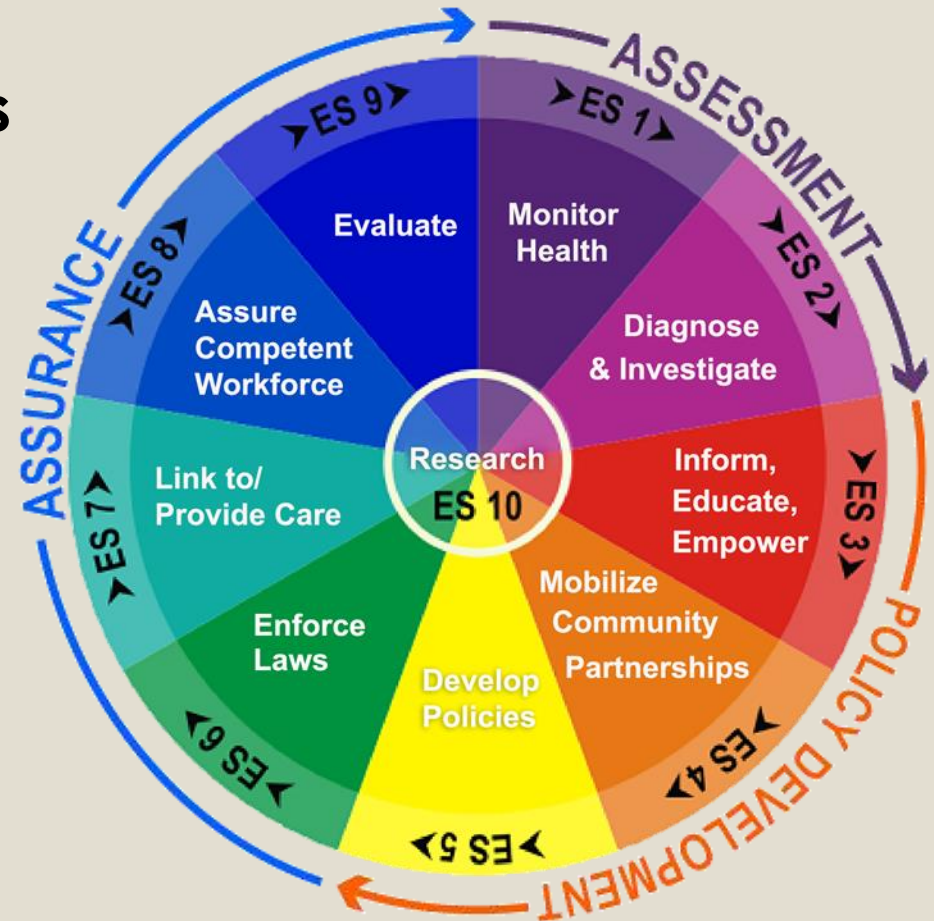


# Essential Service 4: Mobilize Community Partnerships to Identify and Solve Health Problems

Breakout Session B:  
11:05AM-1:00PM

Facilitators:  
Sarah Messiah, Ph.D., MPH  
Ann-Karen Weller, RN, BSN, MBA-HSM

- How well do we truly engage people in local health issues?





# Session Outline

- ❖ **Introductions**
- ❖ Review ground rules
- ❖ **Process and material overview**
- ❖ Essential service and activities review
- ❖ **Review current Essential Service activity**
- ❖ Repeat the following for each Model Standard:
  - **Read Model Standard**
  - Discuss Model Standard activity (i.e., examples)
  - **Facilitate Discussion Questions**
  - Score Performance Measures
  - **Further discussion as needed/re-vote if necessary**
  - Consensus on final score
  - **Summarize strengths, weaknesses, and short- and long-term improvement opportunities for the Model Standard**
- ❖ Session Summary and Recap

# Ground Rules

- Stay present (phones on silent/vibrate, limit side conversations)
- Speak one at a time
- Be open to new ideas
- Step up/step back (to make sure all participate)
- Avoid repeating previous remarks
- Allow facilitator to move conversation along
- Welcome all perspectives
- Use electronic device to vote (everyone votes at same time)
- Raise hand to request additional discussion before voting
- Prepare to provide examples and explanation to inform group and increase understanding of your rating



**NACCHO**  
National Association of County & City Health Officials

# National Public Health Performance Standards

## **Local Assessment Instrument**

Version 3.0

## Essential Service 4

# Mobilize Community Partnerships to Identify and Solve Health Problems

- Convening and facilitating partnerships among groups and associations (including those not typically considered to be health related).
- Undertaking defined health improvement planning process and health projects, including preventive, screening, rehabilitation, and support programs.
- Building a coalition to draw on the full range of potential human and material resources to improve community health.



# Essential Service 4 Partners

## Model Standard 4.1: Constituency Development

- Actively identifies and involves community partners
- The LPHS manages the process of establishing collaborative relationships
- Coordinated, effective approach to public health
- Benefits of public health are understood and shared throughout the community



## Model Standard 4.1: Constituency Development

To accomplish this, members of the LPHS work together to:

- Follow an established process for identifying key constituents related to overall public health interests and particular health concerns.
- Encourage constituents to participate in CHA, planning, and improvement efforts.
- Maintain a complete and current directory of community organizations.
- Create forums for communication of public health issues





# Discussion Questions for Model Standard 4.1

## Awareness



How is awareness regarding the importance of public health issues developed with the community-at-large and organizations within the LPHS?

# Discussion Questions for Model Standard 4.1

## Involvement



What organizations are active parts of the LPHS?



How are new individuals/groups identified for constituency building?



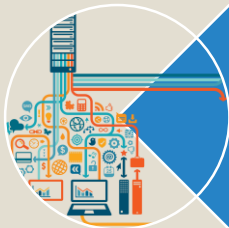
How are constituents encouraged to participate in improving community health?



How are community members engaged to improve health?

# Discussion Questions for Model Standard 4.1

## Quality and Comprehensiveness



Does the LPHS maintain a current and accessible directory of organizations that comprise it?



What is the LPHS' process for identifying key constituents or stakeholders?



How does the LPHS maintain names and contact information for individuals and key constituent groups?

# Discussion Questions for Model Standard 4.1

## Usability



**How accessible is the directory of LPHS organizations?**



**How does the LPHS create forums for communication of public health issues?**

We will be using Participoll in this presentation.  
Please have this website ready:

**<http://mapp.participoll.com>**

<http://mapp.participoll.com/>



**If technical difficulties are encountered during the polling, please use the five assorted color index cards found in your welcome packet to vote.**

# Scoring Chart



<b>A</b>	<b>Optimal</b> Greater than 75% of the activity described within the question is met.
<b>B</b>	<b>Significant</b> Greater than 50% but no more than 75% of the activity described within the question is met.
<b>C</b>	<b>Moderate</b> Greater than 25% but no more than 50% of the activity described within the question is met.
<b>D</b>	<b>Minimal</b> Greater than zero but no more than 25% of the activity described within the question is met.
<b>E</b>	<b>No Activity</b> 0% or absolutely no activity.

To vote, visit <http://mapp.participoll.com>

If technical difficulties are encountered during the polling, please use the five assorted color index cards found in your welcome packet to vote.

To vote, visit <http://mapp.participoll.com>



# Performance Measures for Model Standard 4.1

At what level does the LPHS...

4.1.1 Maintain a complete and current directory of community organizations?

<b>A</b>	<b>Optimal</b> Greater than 75% of the activity described within the question is met.
<b>B</b>	<b>Significant</b> Greater than 50% but no more than 75% of the activity described within the question is met.
<b>C</b>	<b>Moderate</b> Greater than 25% but no more than 50% of the activity described within the question is met.
<b>D</b>	<b>Minimal</b> Greater than zero but no more than 25% of the activity described within the question is met.
<b>E</b>	<b>No Activity</b> 0% or absolutely no activity.



To vote, visit <http://mapp.participoll.com>



# Performance Measures for Model Standard 4.1

At what level does the LPHS...

4.1.2 Follow an established process for identifying key constituents related to overall public health interests and particular health concerns?

<b>A</b>	<b>Optimal</b> Greater than 75% of the activity described within the question is met.
<b>B</b>	<b>Significant</b> Greater than 50% but no more than 75% of the activity described within the question is met.
<b>C</b>	<b>Moderate</b> Greater than 25% but no more than 50% of the activity described within the question is met.
<b>D</b>	<b>Minimal</b> Greater than zero but no more than 25% of the activity described within the question is met.
<b>E</b>	<b>No Activity</b> 0% or absolutely no activity.





To vote, visit <http://mapp.participoll.com>



# Performance Measures for Model Standard 4.1

At what level does the LPHS...

4.1.3 Encourage constituents to participate in activities to improve community health?

<b>A</b>	<b>Optimal</b> Greater than 75% of the activity described within the question is met.
<b>B</b>	<b>Significant</b> Greater than 50% but no more than 75% of the activity described within the question is met.
<b>C</b>	<b>Moderate</b> Greater than 25% but no more than 50% of the activity described within the question is met.
<b>D</b>	<b>Minimal</b> Greater than zero but no more than 25% of the activity described within the question is met.
<b>E</b>	<b>No Activity</b> 0% or absolutely no activity.



To vote, visit <http://mapp.participoll.com>



# Performance Measures for Model Standard 4.1

At what level does the LPHS...

4.1.4 Create forums for communication of public health issues?

<b>A</b>	<b>Optimal</b> Greater than 75% of the activity described within the question is met.
<b>B</b>	<b>Significant</b> Greater than 50% but no more than 75% of the activity described within the question is met.
<b>C</b>	<b>Moderate</b> Greater than 25% but no more than 50% of the activity described within the question is met.
<b>D</b>	<b>Minimal</b> Greater than zero but no more than 25% of the activity described within the question is met.
<b>E</b>	<b>No Activity</b> 0% or absolutely no activity.



# Performance Measures for Model Standard 4.1

**Strengths**

**Weaknesses**

**Short-Term  
Improvement  
Opportunities**

**Long-Term  
Improvement  
Opportunities**

# Model Standard 4.2: Community Partnerships

- Work together to improve community health
- Information sharing, activity coordination, resource sharing, and in-depth collaboration
- Strategically align interests to achieve a common purpose
- Sharing responsibilities, resources, and rewards
- Collaborative, dynamic, and inclusive approach to community health improvement

## Model Standard 4.2: Community Partnerships

To accomplish this, members of the LPHS work together to:

- Establish community partnerships and strategic alliances to provide a comprehensive approach to improving health in the community.
- Establish a broad-based community health improvement committee.
- Assess how well community partnerships and strategic alliances are working to improve community health.

# Discussion Questions for Model Standard 4.2

## Involvement



What types of partnerships exist in the community to maximize public health improvement activities?



How do organizations within these partnerships interact?



If there is a broad-based community health improvement committee, what does the committee do?

# Discussion Questions for Model Standard 4.2

## Quality and Comprehensiveness



In what types of activities does the LPHS engage?



How does the LPHS review the effectiveness of community partnerships and strategic alliances?

To vote, visit <http://mapp.participoll.com>



## Performance Measures for Model Standard 4.2

At what level does the LPHS...

4.2.1 Establish community partnerships and strategic alliances to provide a comprehensive approach to improving health in the community?

<b>A</b>	<b>Optimal</b> Greater than 75% of the activity described within the question is met.
<b>B</b>	<b>Significant</b> Greater than 50% but no more than 75% of the activity described within the question is met.
<b>C</b>	<b>Moderate</b> Greater than 25% but no more than 50% of the activity described within the question is met.
<b>D</b>	<b>Minimal</b> Greater than zero but no more than 25% of the activity described within the question is met.
<b>E</b>	<b>No Activity</b> 0% or absolutely no activity.





To vote, visit <http://mapp.participoll.com>



## Performance Measures for Model Standard 4.2

At what level does the LPHS...

4.2.2 Establish a broad-based community health improvement committee?

<b>A</b>	<b>Optimal</b> Greater than 75% of the activity described within the question is met.
<b>B</b>	<b>Significant</b> Greater than 50% but no more than 75% of the activity described within the question is met.
<b>C</b>	<b>Moderate</b> Greater than 25% but no more than 50% of the activity described within the question is met.
<b>D</b>	<b>Minimal</b> Greater than zero but no more than 25% of the activity described within the question is met.
<b>E</b>	<b>No Activity</b> 0% or absolutely no activity.



To vote, visit <http://mapp.participoll.com>



## Performance Measures for Model Standard 4.2

At what level does the LPHS...

4.2.3 Assess how well community partnerships and strategic alliances are working to improve

<b>A</b>	<b>Optimal</b> Greater than 75% of the activity described within the question is met.
<b>B</b>	<b>Significant</b> Greater than 50% but no more than 75% of the activity described within the question is met.
<b>C</b>	<b>Moderate</b> Greater than 25% but no more than 50% of the activity described within the question is met.
<b>D</b>	<b>Minimal</b> Greater than zero but no more than 25% of the activity described within the question is met.
<b>E</b>	<b>No Activity</b> 0% or absolutely no activity.



# Discussion Notes for Model Standard 4.2

**Strengths**

**Weaknesses**

**Short-Term  
Improvement  
Opportunities**

**Long-Term  
Improvement  
Opportunities**

# Essential Service 4: Mobilize Community Partnerships to Identify and Solve Health Problems

## Session Summary

