



Welcome to the Forces of Change Assessment Community Meeting

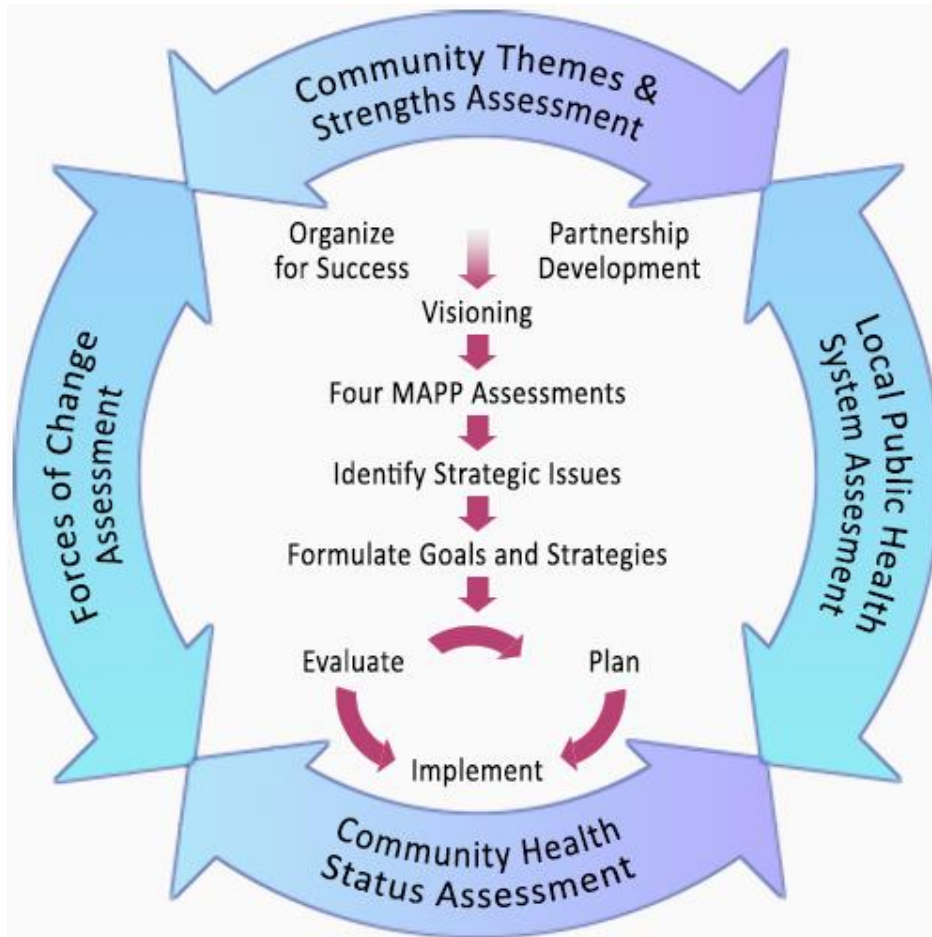


Forces of Change Assessment Overview



Ann-Karen Weller, RN, BSN, MBA-HSM
Florida Department of Health in Miami-Dade County
Assistant Community Health Nursing Director

Mobilizing for Action through Planning and Partnerships (MAPP) Process



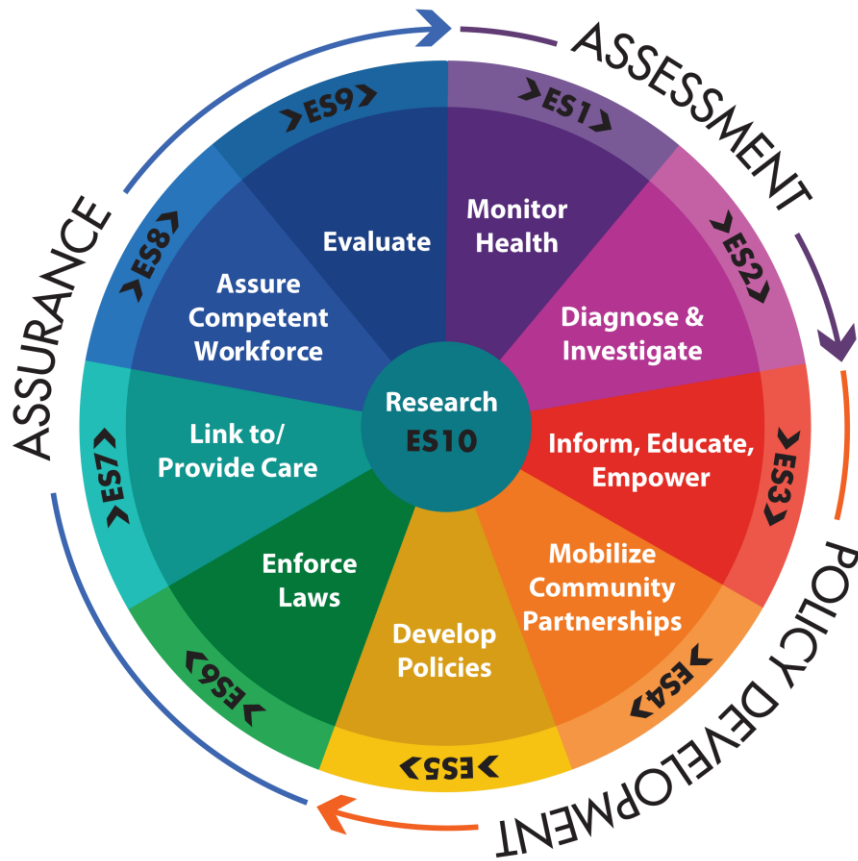
A community-wide strategic planning tool for improving community health

Community Health Improvement Plan (CHIP)

- MAPP process aids in the development of the new Community Health Improvement Plan (CHIP)
- CHIP is the community's 5-year plan for improving community health and quality of life



Local Public Health System Assessment



Local Public Health System Assessment

PERFORMANCE SIGNIFICANT



The Miami-Dade County local public health system's overall performance ranking score is **67%**, which represents **Significant** Activity.

DATA OVERVIEW



Two Essential Services scored **Optimal**, seven scored **Significant**, and one as **Moderate** Activity.

Optimal Activity (76-100%)

- ES 5: Develop Policies/Plans, 81%
- ES 2: Diagnose and Investigate, 79%

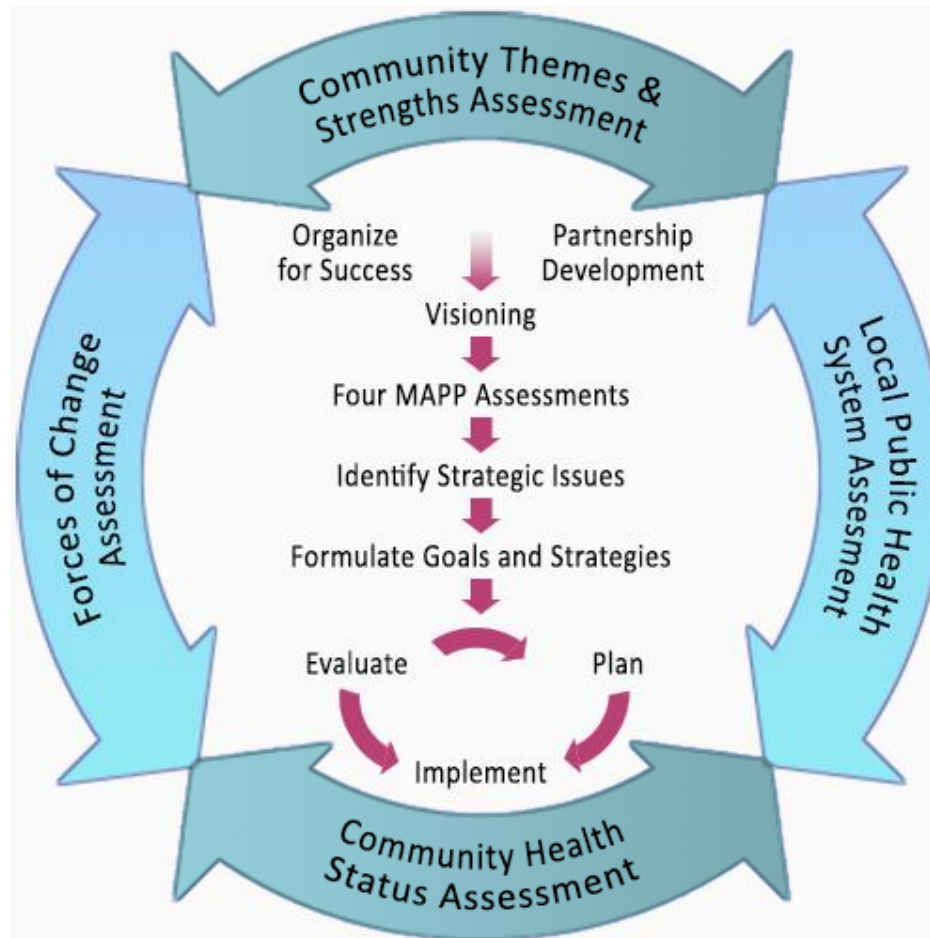
Significant Activity (51-75%)

- ES 4: Mobilize Partnerships, 73%
- ES 1: Monitor Health Status, 69%
- ES 6: Enforce Laws, 68%
- ES 3: Inform/Educate/Empower, 67%
- ES 8: Assure Workforce, 64%
- ES 10: Research/Innovation, 58%
- ES 9: Evaluate Services, 58%

Moderate Activity (26-50%)

- ES 7: Link to Health Services, 50%

Mobilizing for Action through Planning and Partnerships (MAPP) Process



Forces of Change Assessment



Factors that directly or indirectly affect health
and the health of the community

Forces of Change Assessment



Objectives:

- Identify trends, factors, and events that are or will be influencing the health and quality of life of the community and the local public health system
- Identify challenges or opportunities generated by key forces
- Bring partners together on common ground to collaboratively address changes



The Shifting Landscape of Public Health



Lillian Rivera, RN, MSN, PhD

*Florida Department of Health in Miami-Dade County
Administrator/Health Officer*



The Shifting Landscape of Public Health



Collaboration for Community Health

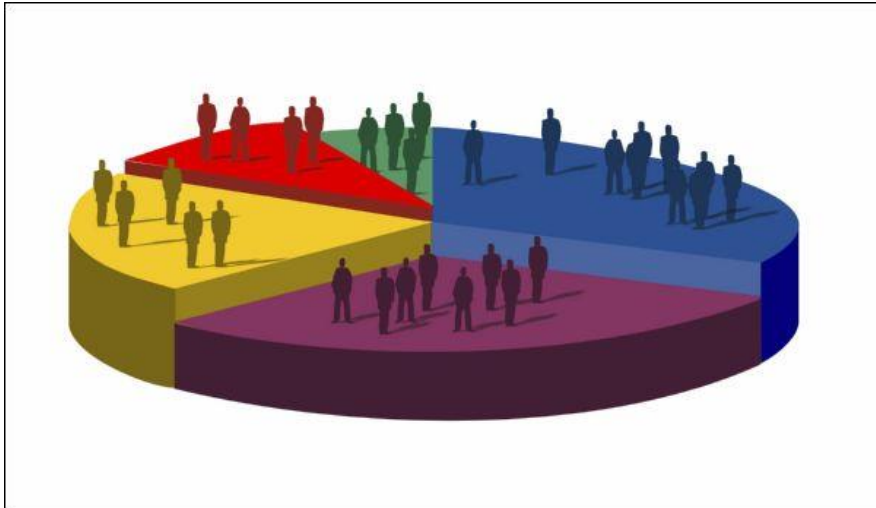


Cross-sector collaboration can help us:

- **Implement comprehensive strategies**
- **Align efforts**
- **Avoid duplication**
- **Increase efficiencies**

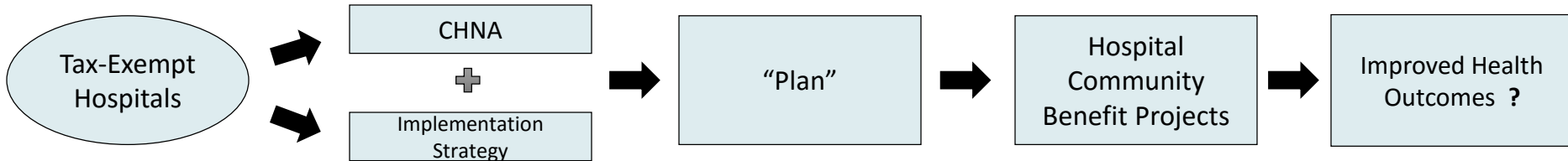


Forces of Change



Current State: Similar but Non-aligned Community Health Improvement Frameworks

Public Health Accreditation, HRSA 330 Grants, United Way & Other Community Assessments



Catholic Health Assoc. Guide
ACHI (AHA) Toolkit
Private Vendors

IRS Hospital Community Benefit Compliance State & Local Activities

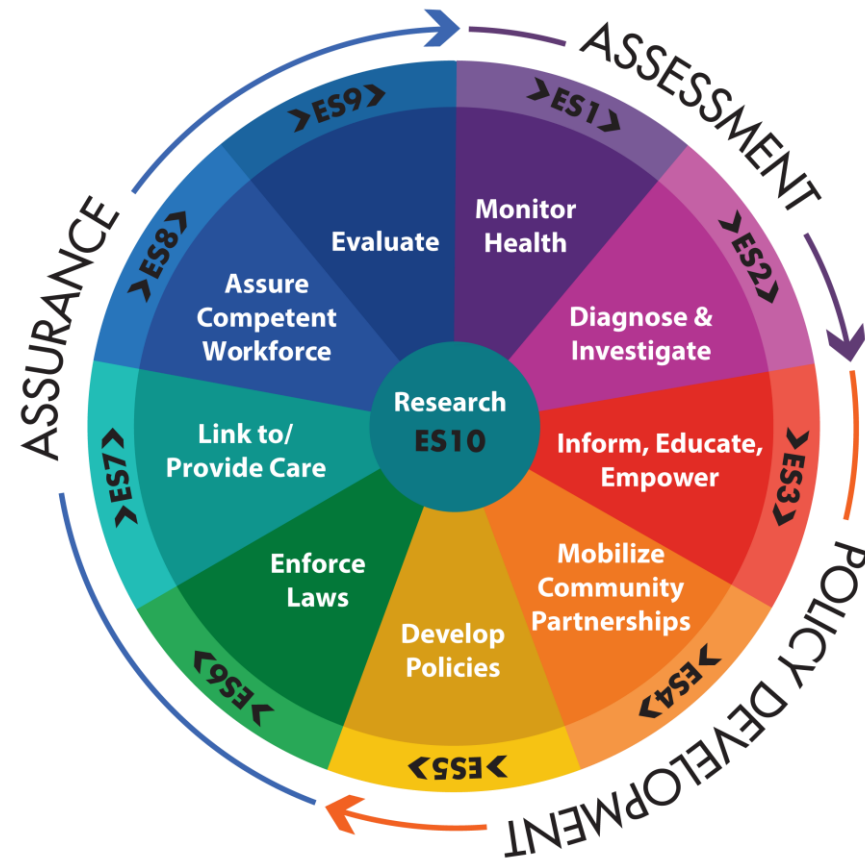
§ 501(r) Requirements,
Form 990 Schedule H

26 USC § 501(c)(3), IRS
Ruling 69-545, and Form
990 Schedule H

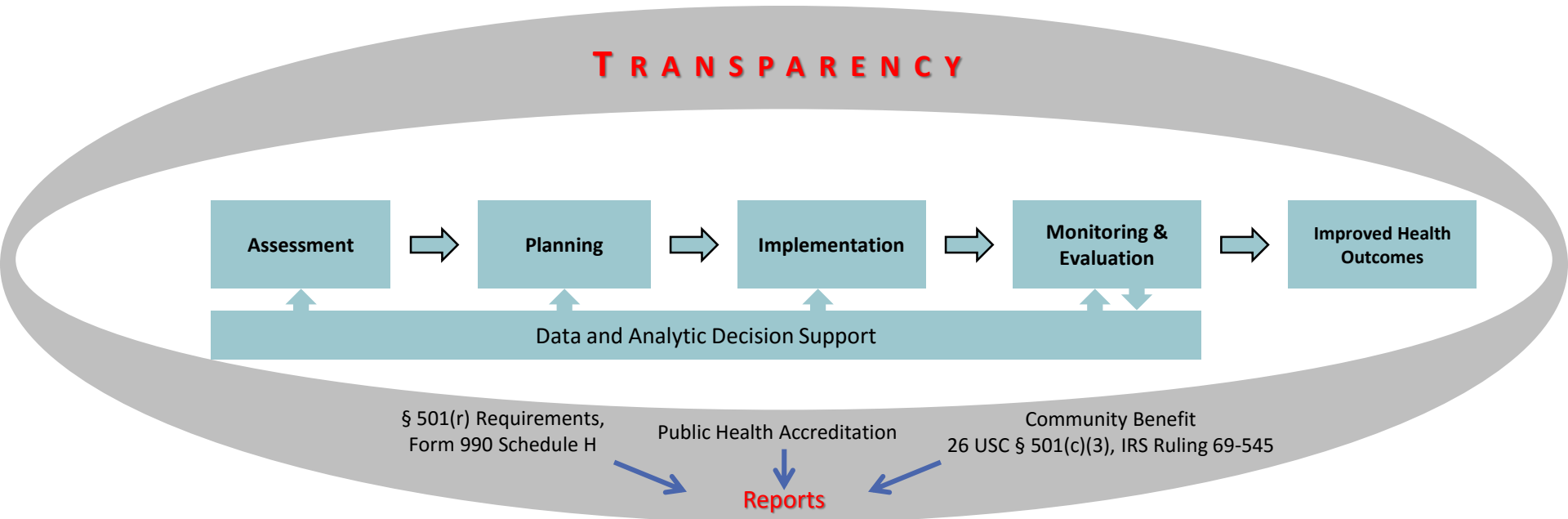


10 Essential Public Health Services

1. **Monitor health** status to identify community health problems.
2. **Diagnose and investigate** health problems and health hazards in the community.
3. **Inform, educate and empower** people about health issues.
4. **Mobilize community partnerships** to identify and solve health problems.
5. **Develop policies** and plans that support individual and community health efforts.
6. **Enforce laws** and regulations that protect health and ensure safety.
7. **Link people to** needed personal health services and assure the provision of health **care** when otherwise unavailable.
8. **Assure a competent** public health and personal health care **workforce**.
9. **Evaluate** effectiveness, accessibility, and quality of personal and population-based health services.
10. **Research** for new insights and innovative solutions to health problems.



Desired State: A Unified Community Health Improvement Framework Supporting Multiple Stakeholders



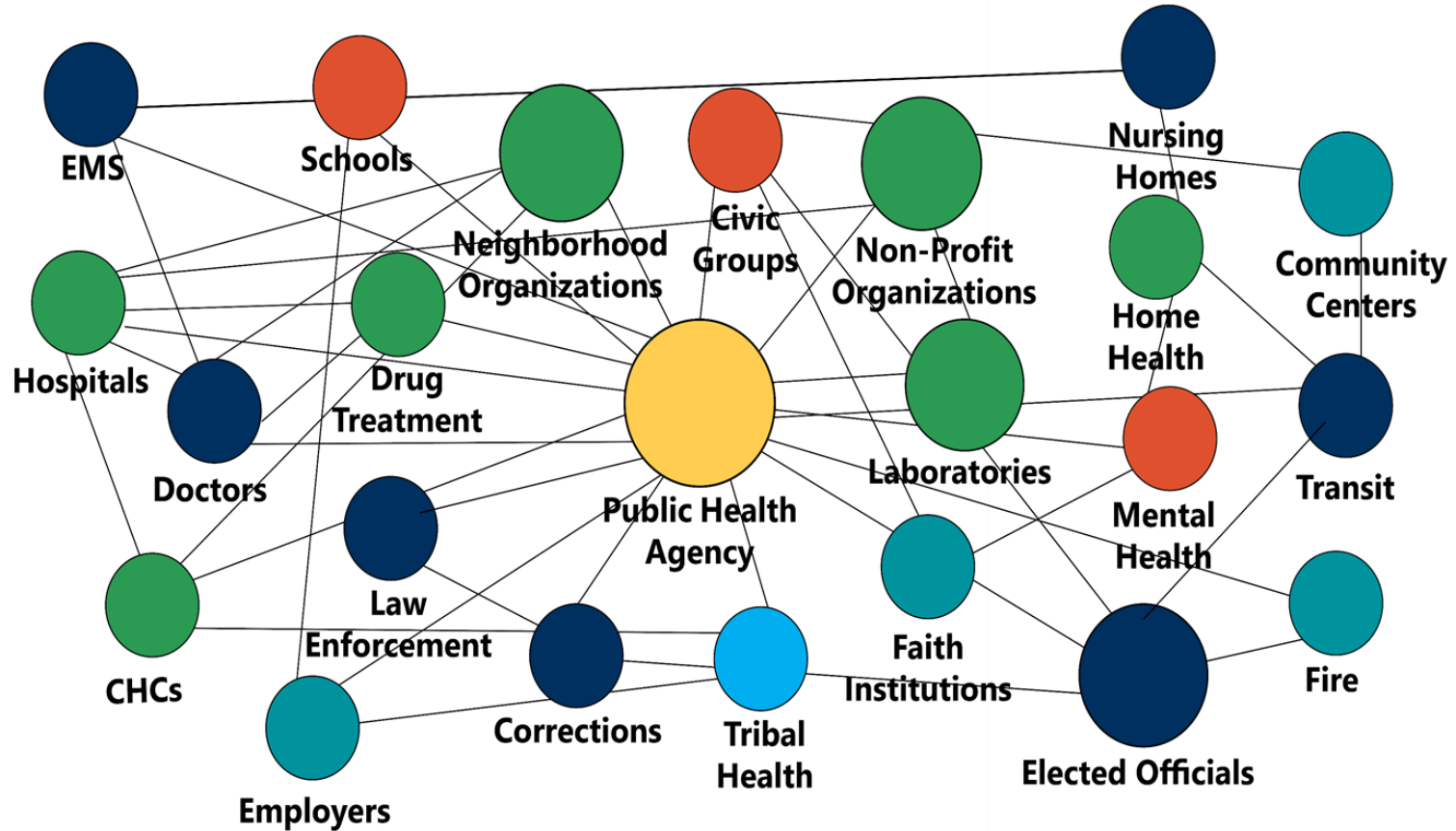
Community Engagement and Assuring Shared Ownership

Key Issues to Address to Promote Alignment between Accreditation, NP Hospital CB, and Other Community-Oriented Processes

- Arranging Assessments that Span Jurisdictions
- Using Small Area Analysis to Identify Communities with Health Disparities
- Collecting and Using Information on Social Determinants of Health
- Collecting Information on Community Assets
- Using Explicit Criteria and Processes to Set Priorities (use of evidence to guide decision-making)
- Assuring Shared Investment and Commitments of Diverse Stakeholders
- Collaborating Across Sectors to Implement Comprehensive Strategies
- Participatory Monitoring and Evaluation of Community Health Improvement Efforts



Thank you for being a Partner!



Collaboration and Partnership





Join the Consortium!

Consortium membership is free and open to all individuals who share the vision, mission and goals of the Consortium.

If you are interested in becoming a member of the Consortium, please visit: healthymiamidade.org/membership



Breakout Sessions

Main Stage



Session 1:

Social/Economic Forces

9:40am-10:40am

Session 4:

Environmental/Scientific Forces

10:45am-12:00pm

Training Room



Session 2:

Legal/Ethical Forces

9:40am-10:40am

Session 3:

Political/Technological Forces

10:45am-12:00pm

Please complete your evaluation



www.surveymonkey.com/FCAEvaluation





Welcome to the Forces of Change Assessment Community Meeting